

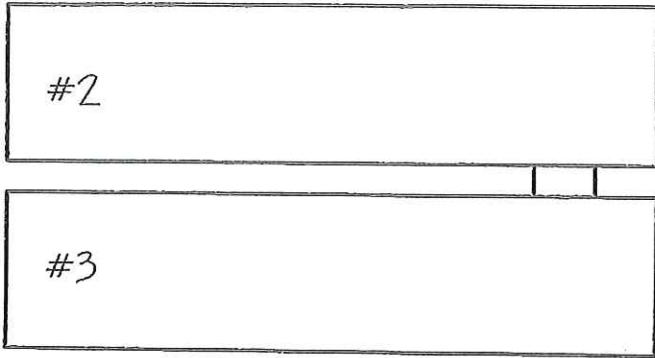
Policy No.: [REDACTED]

Ticket No.: [REDACTED]

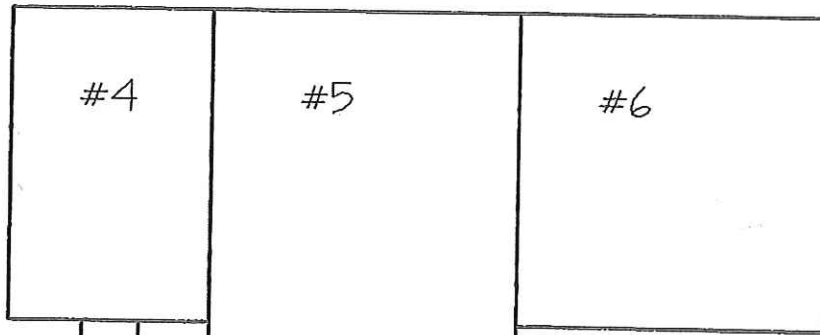
**DIAGRAM SHEET**

Location: 225 Dunn Road, Fayetteville, NC 28301

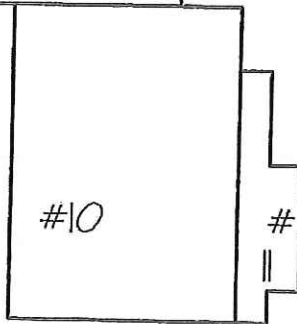
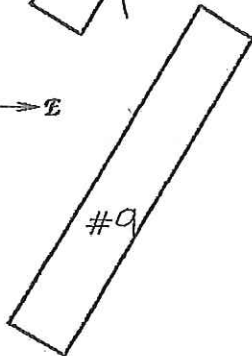
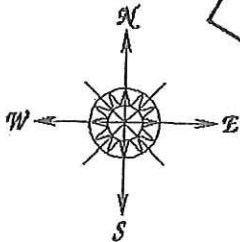
Scale: No Scale



D  
u  
n  
n



R  
o  
a  
d



EQUIFAX

The  
Information  
Source

Commercial  
Specialists

Policy No.: [REDACTED]

Ticket No.: [REDACTED]

DIAGRAM SHEET

Location: 225 Dunn Road, Fayetteville, NC 28301

Scale: N/A

Details of diagram for Riverside Mattress Company.

Building #1 - 1-Story, Joisted Masonry on a slab. 624 Square Feet. Used for Storage. Built in 1965.

Building #2 - 1-Story, Non-Combustible on a slab. 10,500 Square Feet. Used for Warehouse. Built in 1983.

Building #3 - 1-Story, Non-Combustible on a slab. 10,500 Square Feet. Used for Warehouse. Built in 1983

Building #4 - 1-Story, Non-Combustible on a slab. 6,400 Square Feet. Used for Box Spring Assembly. Built in 1983. HVAC / 9' high / 15' x 10' <sup>10</sup> <sub>10</sub> <sup>2</sup>  
Duck High to Drive

Building #5 - 1-Story, Non-Combustible on a slab. 18,500 Square Feet. Used for mattress assembly. Built in 1991. HVAC / 17' x 9' <sup>11</sup> <sub>11</sub> / sprinkled  
Drive in

Building #6 - 1-Story, Non-Combustible on a slab. 9,500 Square Feet. Used for Warehouse. Built in 1983. Insulated

Building #7 - 1-Story, Non-Combustible on a slab. 126 Square Feet. Used for Air Compressor storage. Built in 1993.

Building #8 - 1-Story ~~Frame~~ on a slab ~~1,007 Square Feet~~. Used for storage. Built in 1965.

Building #9 - 1-Story, Joisted Masonry on a slab. 2,360 Square Feet. Used for Assembly. Built in 1965.

Building #10 - 1-Story, Joisted Masonry on a slab. 7,400 Square Feet. Used for Assembly operations. Built in 1965.

Building #11 - 1-Story, Joisted Masonry on a slab. 1,200 Square Feet. Used for Office space. Built in 1965.

NOTE: All Building are non-sprinklered.